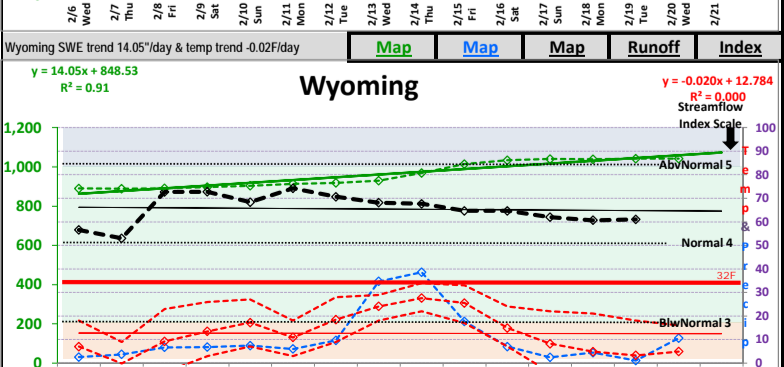
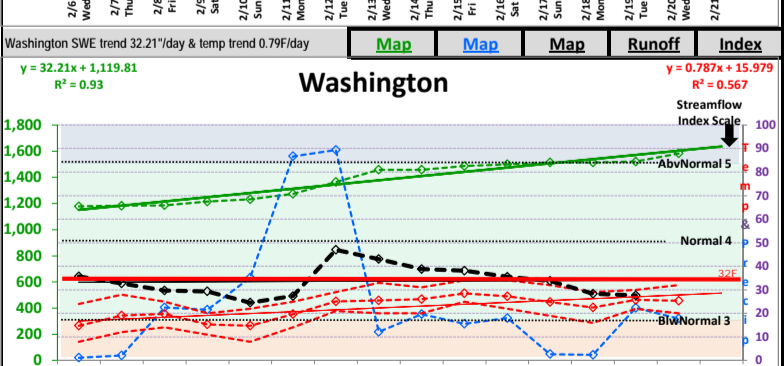
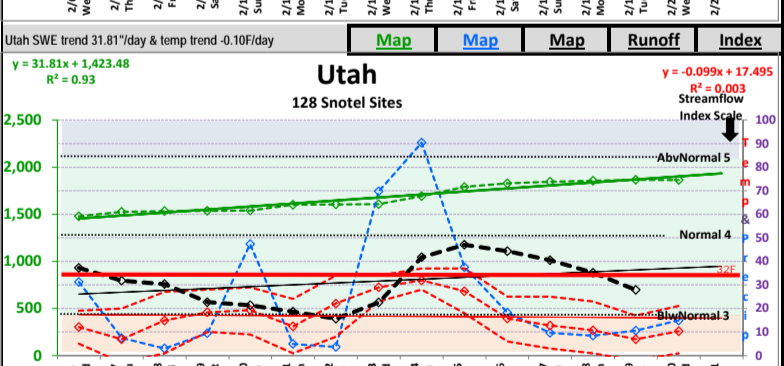
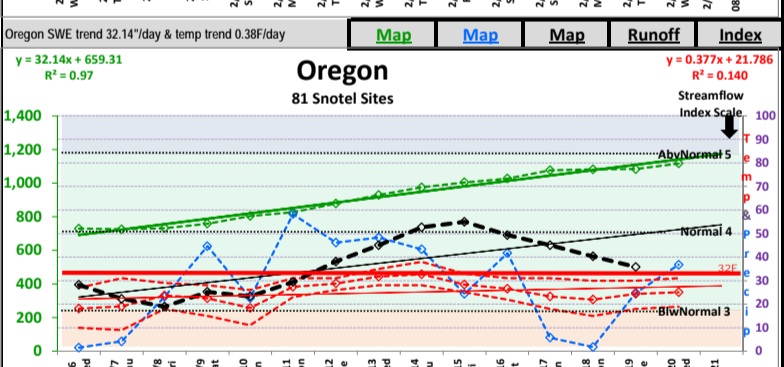
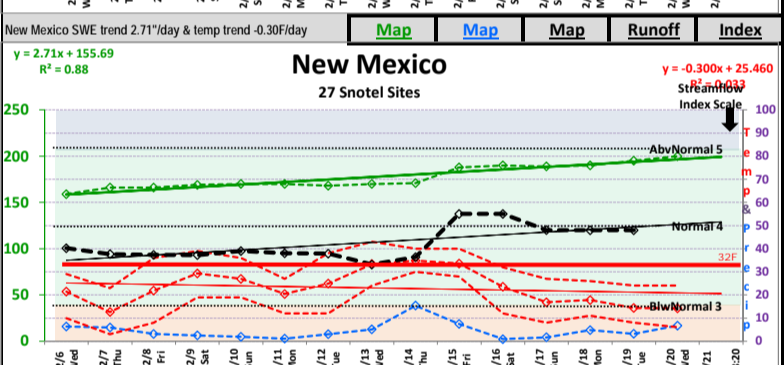
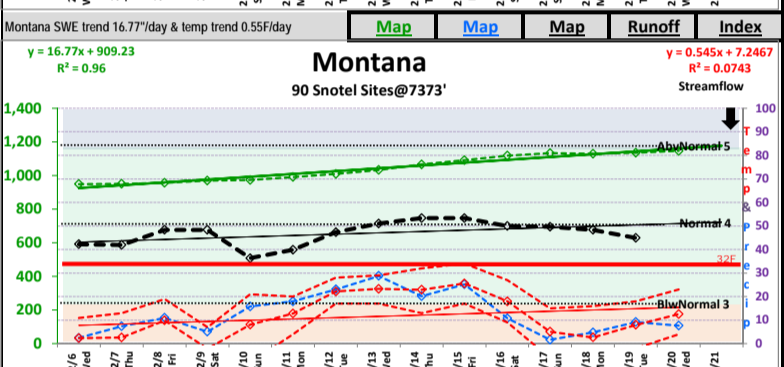
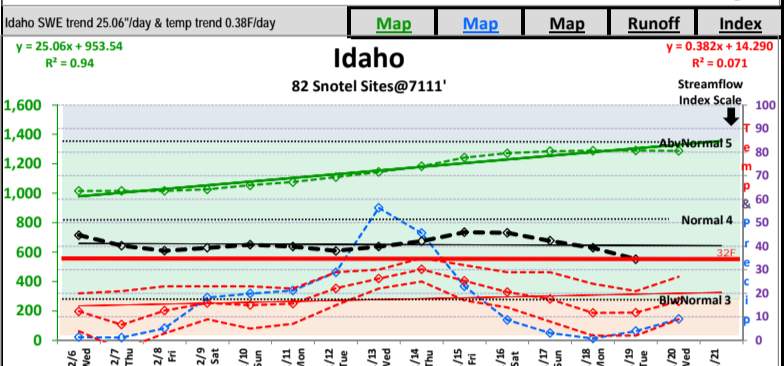
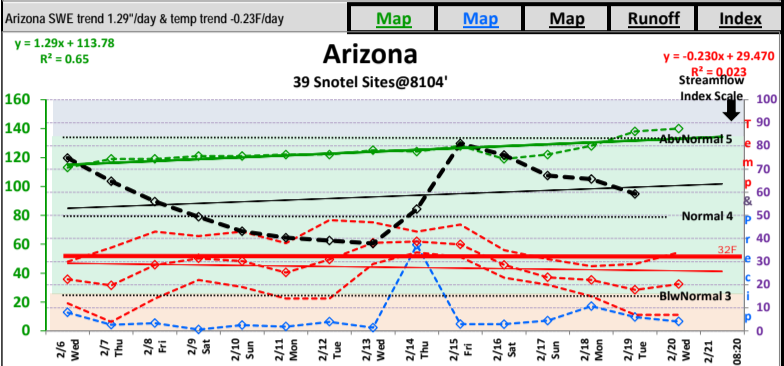
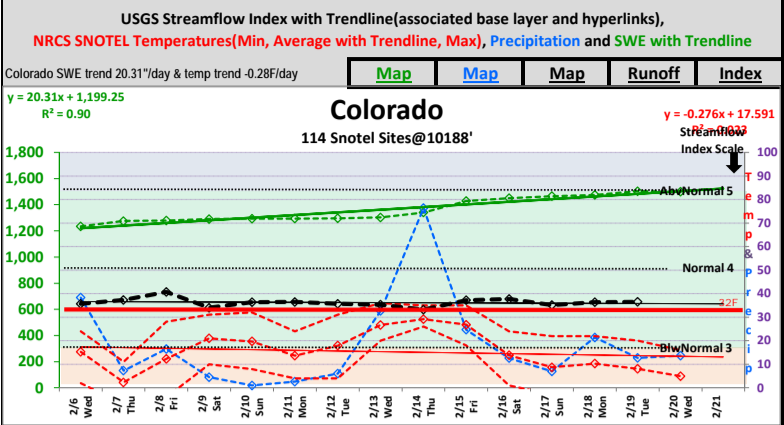




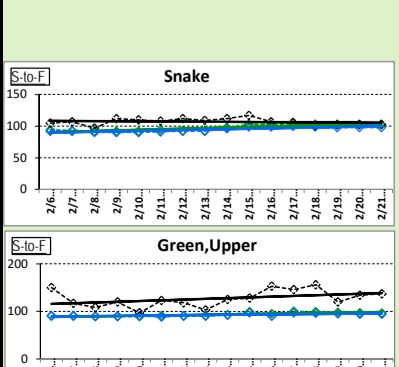
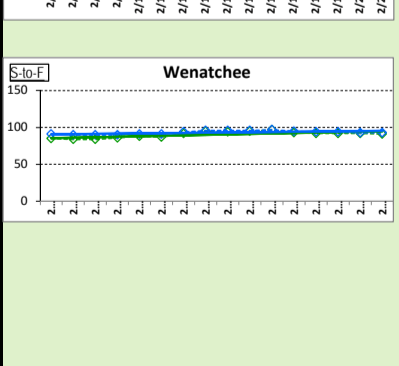
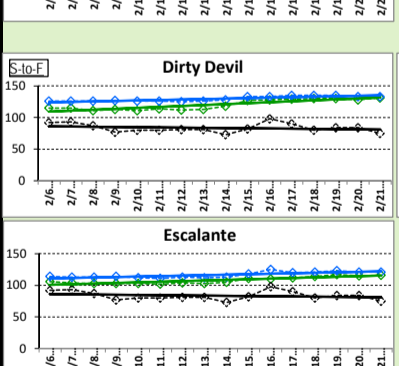
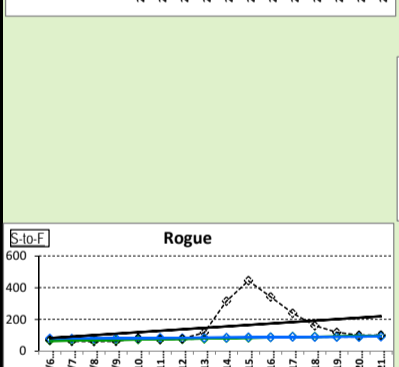
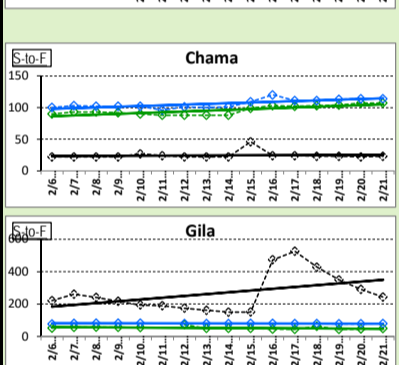
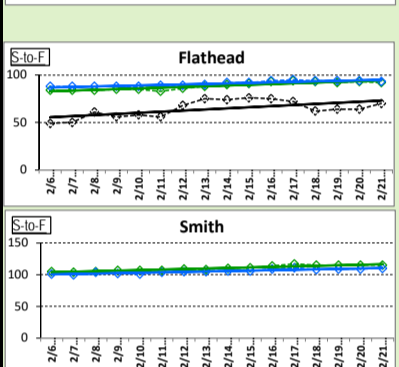
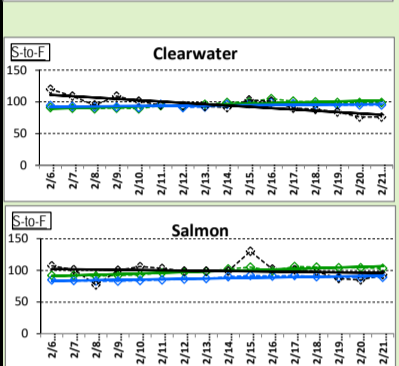
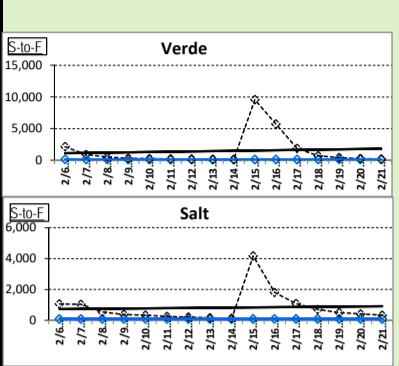
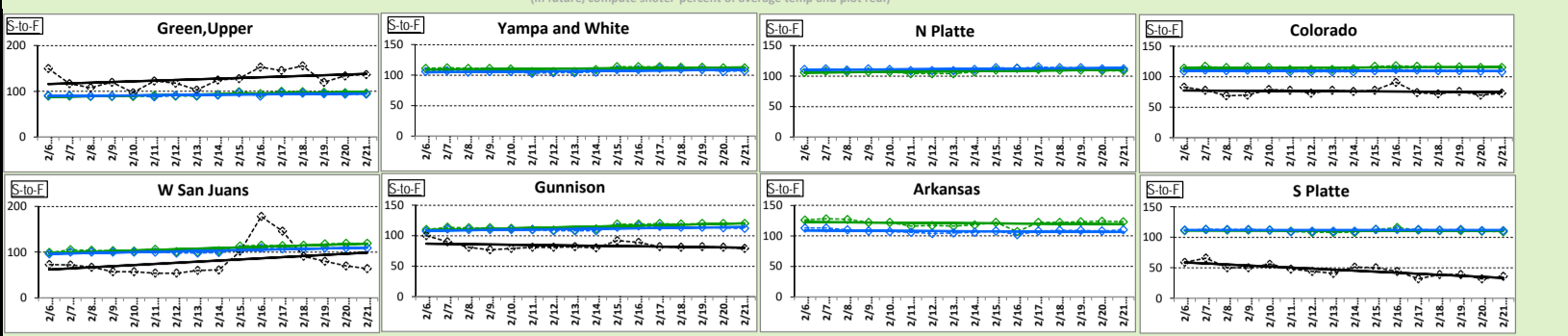
## Two Week SNOTEL and USGS State Plots of



## Two Week SNOTEL and USGS Basin Plots of Percent of Average

Precipitation with Trend Line, SWE with Trend Line and 'Select Rivers' with Trendline

(In future, compute snotel percent of average temp and plot red.)



EXPERIMENTAL(magenta data fabricated)

Temperatures(Min, Average with Trendline, Max), Temperatures(Average Min, Average, Max)  
 Precipitation and SWE with Trendline

